

公开登记
OPEN FOR REGISTRATION

KRUBONG 御景园
HHEIGHTS
Presint Pelangi 3
PHASE 3

居高临下的家园

AN EXCLUSIVE HILLTOP LIVING RESIDENCES



DOUBLE STOREY 双层半独立

SEMI-D

SPECIFICATION

STRUCTURE

R.C Frame

ROOF

Conc. Roof Tiles / Conc. Slab

CEILING

Plaster Ceiling / Skim Coat Asbestos Free Flat Ceiling Sheets

WALLS

Brickwall / Conc. Wall

PAINTINGS

External - Weather Resisting Paint

Internal - Emulsion Paint

WALL FINISHES

Kitchen - Ceiling Height Porcelain Tiles / Ceramic Tiles

Bathrooms - Ceiling Height Porcelain Tiles / Ceramic Tiles

Others - Plastered / Skim Coat & Emulsion Paints

FLOOR FINISHES

Living / Dining / Kitchen - Porcelain Tiles / Ceramic Tiles

Bedrooms & Bathrooms - Porcelain Tiles / Ceramic Tiles

Porch - Porcelain Tiles / Ceramic Tiles

Others - Cement Render

WINDOWS

Aluminum/ MS Frame Window

DOORS

Aluminum Frame Sliding Door / MS Frame Timber Door/ Plywood Door

FENCING

1500mm High Brickwall

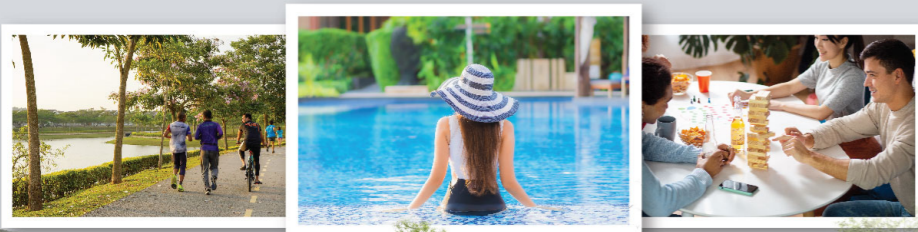
M.S. Gate

SANITARY FITTINGS

	TYPE A	TYPE B
Kitchen Sink	1 nos	1 nos
Basin	4 nos	4 nos
Water Closet	4 nos	4 nos
Shower	4 nos	4 nos

ELECTRICAL INSTALLATION

	TYPE A	TYPE B
Lighting Point	16 nos	17 nos
Power Point	12 nos	13 nos
Fan Point	7 nos	7 nos
Telecommunication Point	1 nos	1 nos
Water Heater Point	4 nos	4 nos
Door Bell Point	1 nos	1 nos
TV Point	1 nos	1 nos

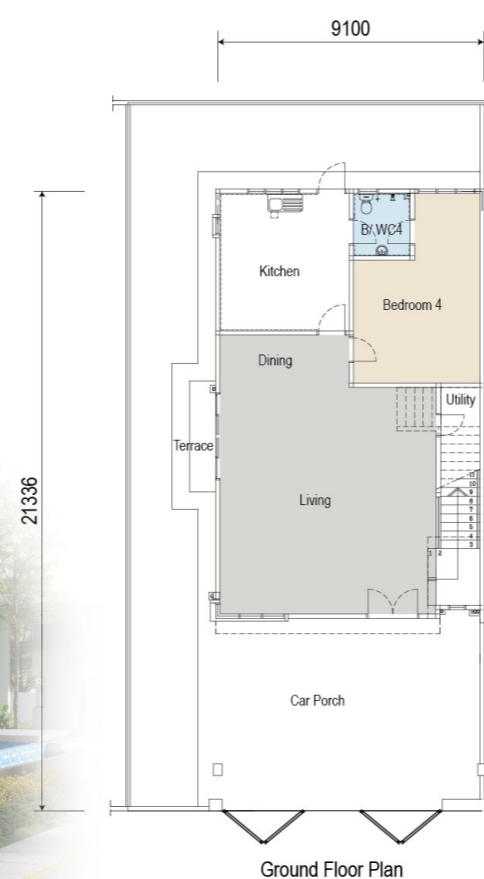


DOUBLE STOREY 双层半独立

SEMI-D

40' x 80'

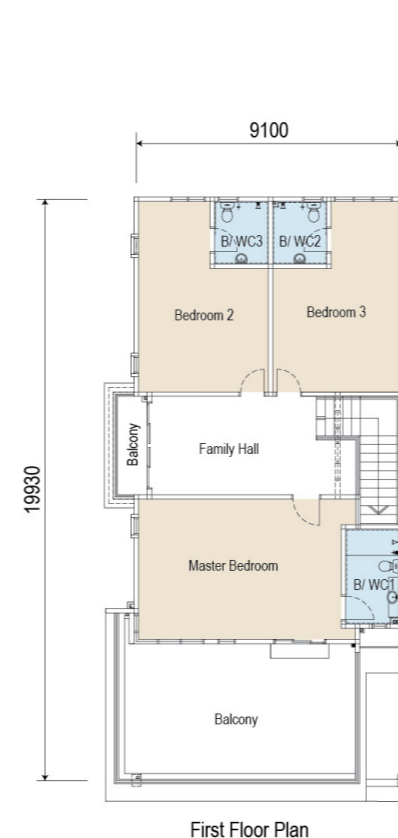
Type A 款



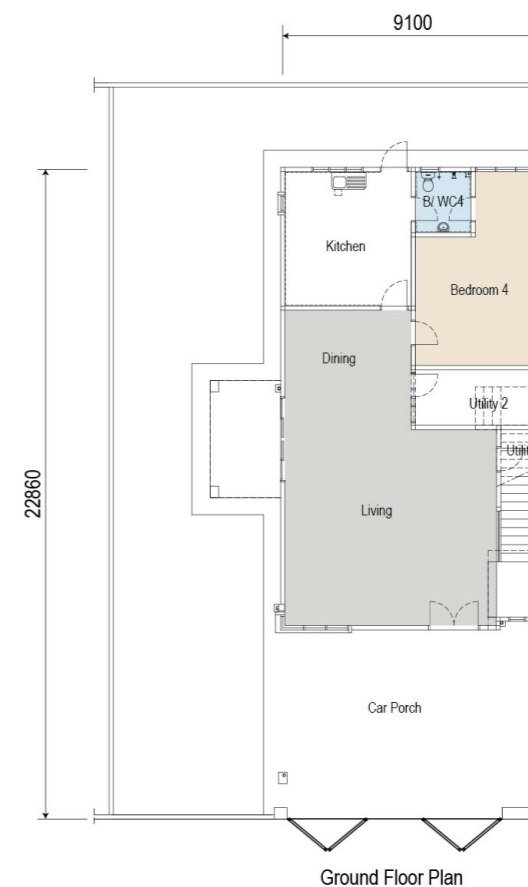
Ground Floor Plan

49'8" x 85'

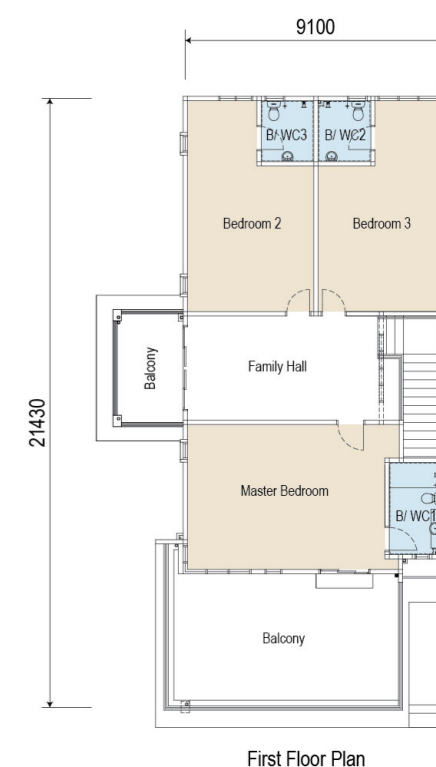
Type B 款



First Floor Plan

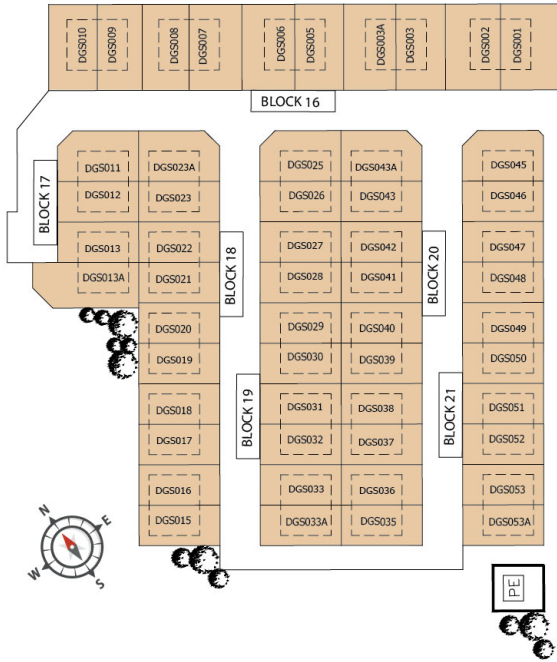


Ground Floor Plan



First Floor Plan

SITE PLAN



06. 337 3333

- | | |
|-------------------------|---------------------------|
| 012. 601 0486 Vinz Lee | 012. 667 0833 Sara Siow |
| 012. 661 1682 Tammy Ong | 012. 606 8195 Styvia Chew |
| 012. 733 0165 Elynn Un | 012. 618 7922 Zura |
| 012. 638 4496 Shira | 012. 631 6670 Aqilah |
| 012. 606 3165 Ryan Kong | 012. 698 6255 Ekin |

Developer:



No. 1B, Wisma PB Realty, Jalan PK 8,
Taman Perindustrian Krubong, 75260 Melaka.
Fax: 06.336 5678 www.pbrealty.com.my

